

TESSUTO BLEND

BLEND FABRIC | TISSU BLEND | STOFF BLEND | TEJIDO BLEND | BLEND ТКАЖБ



TEBL001 Fiordilatte | *Milk cream* | *Crème de lait* | *Milch* | *Crema de leche* | *Молочный крем*



TEBL002 Chantilly | *Chantilly* | *Chantilly* | *Chantilly* | *Шантильи*



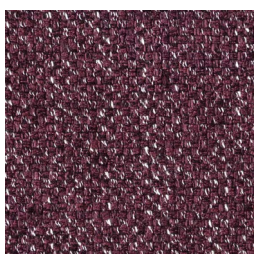
TEBL003 Torroncino | *Nougat* | *Torroncino* | *Torroncino* | *Turrón* | *Туррончино*



TEBL004 Gianduia | *Gianduja* | *Gianduia* | *Gianduia* | *Gianduia* | *Джандуя*



TEBL005 Tiramisù | *Tiramisu* | *Tiramisu* | *Tiramisu* | *Tiramisu* | *Тирамису*



TEBL007 Confettura | *Jam* | *Confiture* | *Marmelade* | *Confitura* | *Джем*



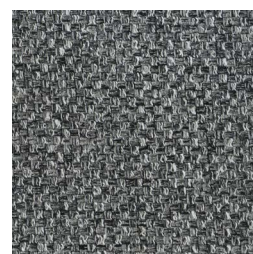
TEBL006 Mojito | *Mojito* | *Mojito* | *Mojito* | *Mojito* | *Moxumo*



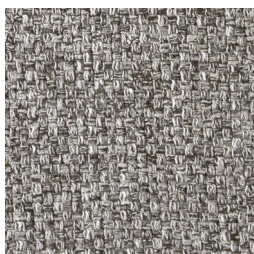
TEBL008 Variegato blu | *Variegated blue* | *Variété bleu* | *Blau* | *Azul* | *Синий*



TEBL009 Latteneve | *Milksnow* | *Neige* | *Schnee* | *Lechenieve* | *Молочный снег*



TEBL010 Cookie | *Cookie* | *Cookie* | *Cookie* | *Cookie* | *Cookie* | *Печенье*



TEBL011 Malaga | *Malaga* | *Malaga* | *Malaga* | *Malaga* | *Manaza*



TEBL012 Melassa | *Molasses* | *Melasse* | *Melasse* | *Melaza* | *Меласса*

TESSUTO BLEND

BLEND FABRIC | TISSU BLEND | STOFF BLEND | TEJIDO BLEND | BLEND TKAHB

COMPOSIZIONE | COMPOSITION

70% Poliestere - 30% Viscosa | 70% Polyester - 30% Viscose



ALTEZZA | WIDTH

140 cm | 55.1 inch

PESO | WEIGHT

550 g/ml

RESISTENZA ALL'ABRASIONE | ABRASION RESISTANCE

Martindale 30.000 cicli/rubs

SOLIDITÀ DEL COLORE ALLA LUCE | COLOUR FASTNESS TO LIGHT

5

RESISTENZA AL PILLING | PILLING RESISTANCE

4



IDROREPELLENTE | WATER REPELLENT

La collezione è impreziosita da un trattamento idrorepellente che ne garantisce la facile pulizia.
The collection is enhanced by a waterproof treatment in order to allow easy cleaning.



RESISTENZA AL FUOCO | FIRE RESISTANCE

TB 117:2013
EN 1021-1 Cigarette test



METODO DI PULIZIA | CLEANING INSTRUCTIONS

Per la pulizia utilizzare un panno di cotone umido e detergente neutro diluito con acqua.

La superficie del tessuto può subire un trasferimento di colore a causa di alcuni coloranti utilizzati per abbigliamento e accessori. Questo fenomeno viene amplificato con alti tassi di umidità o alte temperature. L'azienda non si assume alcuna responsabilità in caso di migrazione di colore.
For cleaning, use a soft damp cloth and gentle detergent diluted with water.

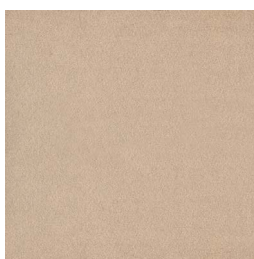
The surface of this article may undergo a color transfer due to some dyes used for clothing and accessories. This phenomenon is amplified with high humidity or high temperatures. The company assumes no responsibility in the event of color migration.

TESSUTO BOUQUET

BOUQUET FABRIC | TISSU BOUQUET | STOFF BOUQUET | TEJIDO BOUQUET | BOUQUET TKAHB



TEBQ001 Vaniglia | *Vanilla* | *Vanille* | *Vanille* | *Vainilla* | *Ваниль*



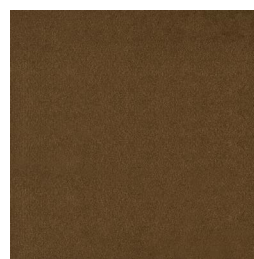
TEBQ002 Ecrù | *Ecrù* | *Ecrù* | *Ecrù* | *Crudo* | *Экрю*



TEBQ003 Noce moscata | *Nutmeg* | *Noix de muscade* | *Muskatblüte* | *Nuez moscada* | *Мускатный орех*



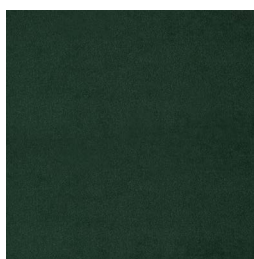
TEBQ004 Argan | *Argan* | *Argan* | *Argan* | *Argan* | *Argán* | *Арган*



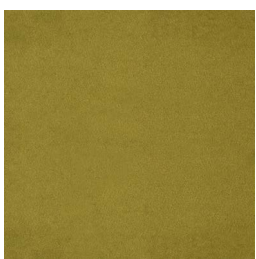
TEBQ005 Castagno | *Chestnut* | *Châtaigne* | *Kastanie* | *Castaño* | *Каштан*



TEBQ006 Vetiver | *Vetiver* | *Vetiver* | *Vetiver* | *Vetiver* | *Vetiver* | *Ветивер*



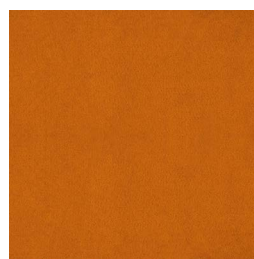
TEBQ007 Pino | *Pine* | *Pin* | *Kiefer* | *Pino* | *Сосна*



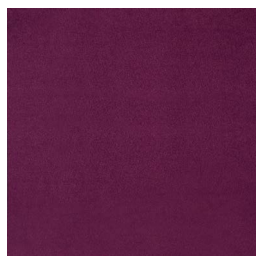
TEBQ008 Pistacchio | *Pistachio* | *Pistache* | *Pistazien* | *Pistacho* | *Фисташка*



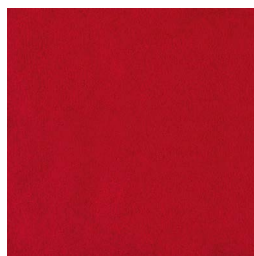
TEBQ010 Craspedia | *Craspedia* | *Craspedia* | *Craspedia* | *Craspedia blumen gelb* | *Craspedia* | *Жёлтая краспедия*



TEBQ009 Papaya | *Papaya* | *Papaya* | *Papaya* | *Papaya* | *Papaya* | *Папайя*



TEBQ011 Viola | *Purple* | *Violet* | *Violett* | *Violeta* | *Фиолетовый*



TEBQ012 Papavero | *Poppy red* | *Coquelicot* | *Mohn rot* | *Amapola* | *Опийный мак*



TEBQ013 Azalea | *Azalea* | *Azalee* | *Azalee* | *Azalea* | *Азалия*



TEBQ015 Eucalipto | *Eucalyptus* | *Eucalyptus* | *Eucalyptus* | *Eucalypto* | *Эвкалипт*



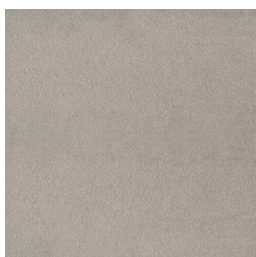
TEBQ014 Foglia di tè | *Teal* | *Feuille de the* | *Tee blatt* | *Hoja de tè* | *Лист чая*



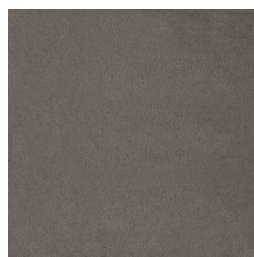
TEBQ016 Blu di Prussia | *Prussian blue* | *Bleu de Prussie* | *Preußisch blau* | *Azul de Prussia* | *Прусский синий*



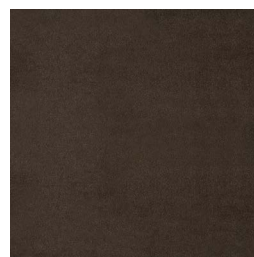
TEBQ017 Blu pavone | *Blue peacock* | *Bleu paone* | *Blue peacock* | *Bleu paone* | *Pfau blau* | *Azul pavo* | *Синий павлин*



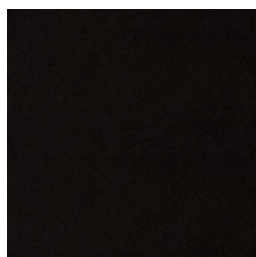
TEBQ018 Grigio chiaro | *Light grey* | *Gris claire* | *Hell grau* | *Gris claro* | *Светло-серый*



TEBQ019 Grigio scuro | *Dark grey* | *Gris foncé* | *Dunkel grau* | *Gris oscuro* | *Тёмно-серый*



TEBQ020 Antracite | *Anthracite* | *Anthracite* | *Anthracite* | *Anthracit* | *Antracita* | *Антрацит*



TEBQ021 Gelso nero | *Black mulberry* | *Murier noir* | *Schwarze maulbeere* | *Morera negra* | *Шелковица чёрная*

TESSUTO BOUQUET

BOUQUET FABRIC | TISSU BOUQUET | STOFF BOUQUET | TEJIDO BOUQUET | BOUQUET TKAHB

COMPOSIZIONE | COMPOSITION

100% Poliestere | Polyester | Polyester | Polyester | Poliéster | Полиэстер

SIMBOLOGIA | LIST OF SYMBOLS



ALTEZZA | WIDTH

140 cm | 55.1 inch

PESO | WEIGHT

390 g/mq ± 5%

RESISTENZA ALL'ABRASIONE | ABRASION RESISTANCE

UNI EN ISO 12947-2:1998 Martindale 100.000 cicli/rubs

SOLIDITÀ DEL COLORE ALLO SFREGAMENTO | COLOUR FASTNESS TO RUBBING

UNI EN ISO 105 X12

a secco/dry 4/5 - a umido/wet 4/5

SOLIDITÀ DEL COLORE ALLA LUCE | COLOUR FASTNESS TO LIGHT

UNI EN ISO 105-B02

5

SOLIDITÀ DEL COLORE AL LAVAGGIO | COLOUR FASTNESS TO CLEANING

UNI EN ISO 105-C06:2010

4/5



IDROPELENTE | WATER REPELLENT



RESISTENZA AL FUOCO | FIRE RESISTANCE

TB117:2013

UNI 9175:2010 (CLASSE 1IM)

RESISTENZA AL FUOCO CON TRATTAMENTO FR | FIRE RESISTANCE WITH FR TREATMENT

BS 5852: Part1:1979 schedule 4 cigarette test

BS 5852: Part1:1979 schedule 5 match test



METODO DI PULIZIA | CLEANING INSTRUCTIONS

Indicazioni per la rimozione delle macchie più comuni: le macchie provocate da liquidi (latte, tè, vino, birra, alcolici etc.) possono essere eliminate semplicemente con un panno umido.

La superficie di questo articolo può subire un trasferimento di colore a causa di alcuni coloranti utilizzati per abbigliamento e accessori (ad esempio jeans). Questo fenomeno viene amplificato con alti tassi di umidità o alte temperature. L'azienda non si assume alcuna responsabilità in caso di migrazione di colore. I dati riportati nella scheda tecnica sono indicativi e in buona fede, ci riserviamo di modificarli in qualsiasi momento al fine di migliorare i nostri prodotti. L'impiego del prodotto va valutato in base all'utilizzo finale, non saremo responsabili per usi impropri. Il colore può subire delle leggere variazioni in base alle diverse partite.

How to remove the most common stains: stains caused by liquids (coffee, milk, tea, wine, beer, alcoholic drinks etc.) can be simply removed with a damp cloth.

This article's surface could have a color transfer due to some dyes utilized for clothing and accessories (for example jeans). This phenomenon increases with the humidity and the high temperature. Our company assumes no responsibility for the transfer of colors caused. The over mentioned data correspond to average values communicated in good faith, we reserve the right to ratify it in any moment, as to improve our products. The product use has to be considered in term of what has to be realized. The product cannot be held up responsible when it is improperly use. Slight colors differences among several lots are admitted.

TESSUTO TASTY

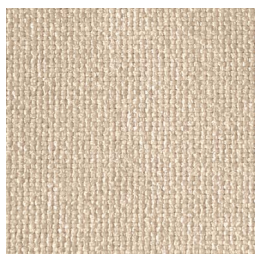
TASTY FABRIC | TISSU TASTY | STOFF TASTY | TEJIDO TASTY | TASTY TKAHB



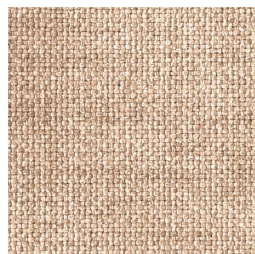
TETY009 Ostrica | Oyster | Huitre | Auster | Ostra | Устрица



TETY002 Meringa | Meringue | Meringue | Meringue | Meringe | Merengue | Beze



TETY003 Mandorla | Almond | Amande | Mandel | Almendra | Миндаль



TETY004 Macadamia | Macadamia | Macadamie | Macadamia | Macadamia | Макадамия



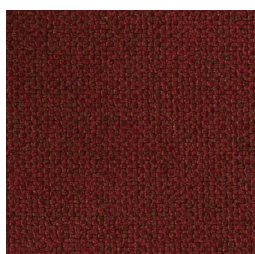
TETY005 Tartufo | Truffle | Truffe | Trüffel | Trufa | Трюфель



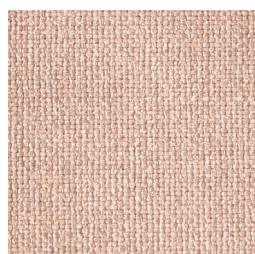
TETY006 Moka | Moka | Moka | Moka | Moka | Moka



TETY007 Caffè | Coffee | Café | Kaffee | Café | Кофе



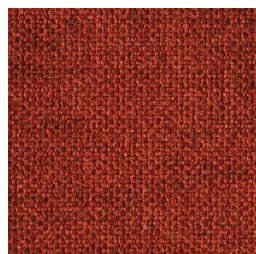
TETY001 Vino | Wine | Vin | Wein | Vino | Вино



TETY013 Rosa canina | Rosehip | Églantier | Hunds-rose | Rosa mosqueta | Шиповник



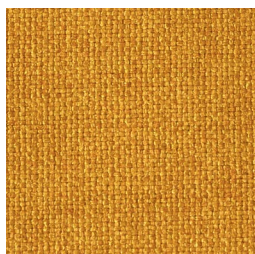
TETY014 Malva | Mauve | Mauve | Malve | Malva | Мальва



TETY015 Peperoncino | Chilli | Piment | Chilishote | Aji picante | Красный перец



TETY016 Paprika | Paprika | Paprika | Paprika | Паприка



TETY017 Zafferano | Saffron | Safran | Safran | Azafrán | Шафран



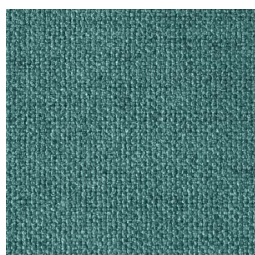
TETY018 Tè matcha | Matcha tea | The matcha | Matcha tee | Te matcha | Чай маха



TETY019 Verde oliva | Olive green | Vert olive | Olivengrün | Verde oliva | Зелёный оливковый



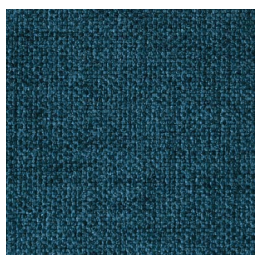
TETY020 Latte menta | Mint milk | Lait menthe | Milch minze | Leche menta | Мятное молоко



TETY021 Duck egg blue | Duck egg blue | Oeuf de canard bleu | Duck egg blue | Azul duck egg | Синее утиное яйцо



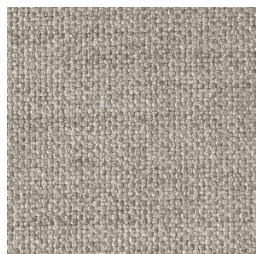
TETY022 Avio | Air force blue | Avio | Air force blau | Avio | Синий павлин



TETY023 Blu pavone | Blue peacock | Bleu paone | Pfau blau | Azul pavo | Синий павлин



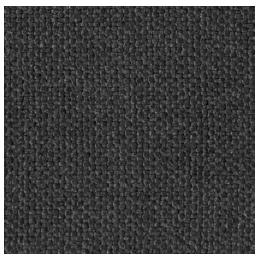
TETY008 Ghiaccio | Ice | Glace | Eis | Hielo | Лёд



TETY010 Grigio caldo | Warm grey | Gris chaud | Warm grau | Gris caliente | Тёплый серый



TETY011 Pepe | Pepper | Poivre | Pfeffer | Pimienta | Перец



TETY012 Liquirizia | Licorice | Reglisse | Lakritze | Regaliz | Лакрица

TESSUTO TASTY

TASTY FABRIC | TISSU TASTY | STOFF TASTY | TEJIDO TASTY | TASTY TKAHB

COMPOSIZIONE | COMPOSITION

100% Poliestere | 100% Polyester



ALTEZZA | WIDTH

140 cm | 55.1 inch

PESO | WEIGHT

525 g/ml

RESISTENZA ALL'ABRASIONE | ABRASION RESISTANCE

ISO 12947-2 Martindale >60.000 cicli/rubs

RESISTENZA AL PILLING | PILLING RESISTANCE

ISO 12945-2 • 4/5

RESISTENZA ALLO SCORRIMENTO DEI FILI | SEAM SLIPPAGE

ISO 13936-2

ordito/warp 4 mm - trama/weft 4 mm

SOLIDITÀ DEL COLORE | COLOUR FASTNESS

solidità alla luce/artificial light

ISO 105 B02 • 4

solidità allo sfregamento a secco/dry rubbing fastness

ISO 105-X12 • 5

solidità allo sfregamento ad umido/wet rubbing fastness

ISO 105-X12 • 4/5



IRRESTRINGIBILE | UNSHRINKABLE



IDROPELENTE | WATER REPELLENT



RESISTENZA AL FUOCO | FIRE RESISTANCE

TB 117-A11:2013



METODO DI PULIZIA | CLEANING INSTRUCTIONS

Per la pulizia utilizzare un panno di cotone umido e detergente neutro diluito con acqua.

La superficie del tessuto può subire un trasferimento di colore a causa di alcuni coloranti utilizzati per abbigliamento e accessori. Questo fenomeno viene amplificato con alti tassi di umidità o alte temperature. L'azienda non si assume alcuna responsabilità in caso di migrazione di colore.

For cleaning, use a soft damp cloth and gentle detergent diluted with water. The surface of this article may undergo a color transfer due to some dyes used for clothing and accessories. This phenomenon is amplified with high humidity or high temperatures. The company assumes no responsibility in the event of color migration.