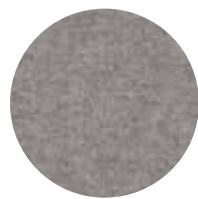


FABRICS

DIVINA MELANGE 3 (KVADRAT, FABRIC IV)



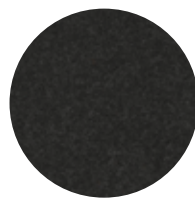
0120



0147



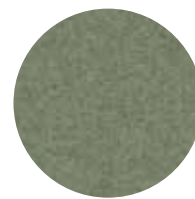
0277



0180



0967



0917



0427



0547



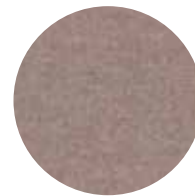
0557



0620

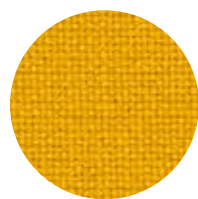


0617

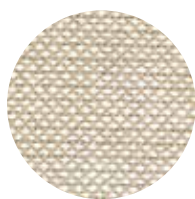


0227

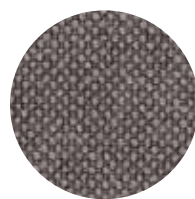
HALLINGDAL 65 (KVADRAT, FABRIC IV)



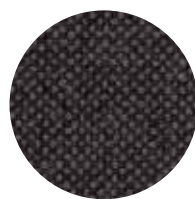
457 Yellow



200 Beige



153 Grey



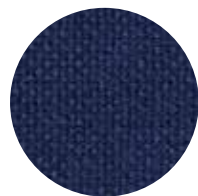
173 Black grey



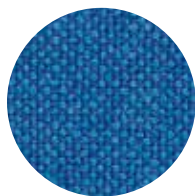
190 Black



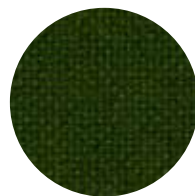
370 Brown



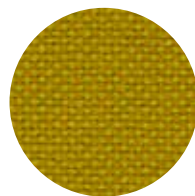
764 Dark blue



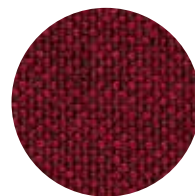
733 Blue



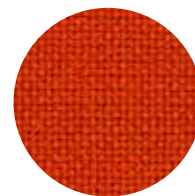
960 Green



420 Yellow orange



687 Bordeaux

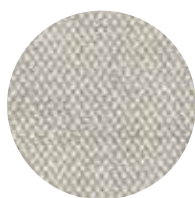


600 Orange

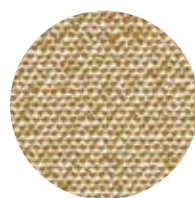
SAFIRE (SAHCO, FABRIC IV)



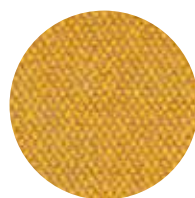
007



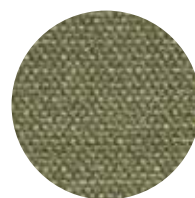
008



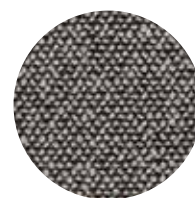
016



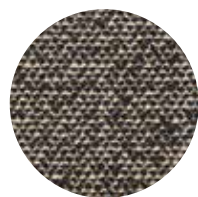
017



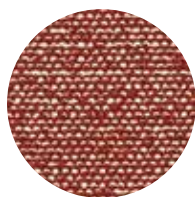
005



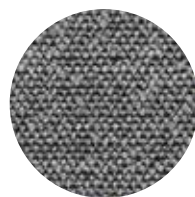
003



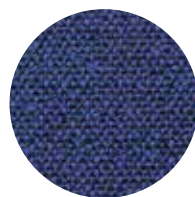
001



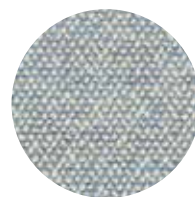
013



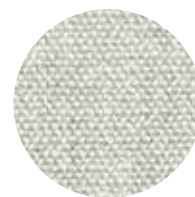
009



011



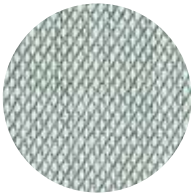
012



006

FABRICS

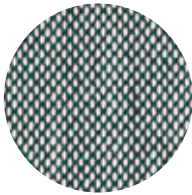
STEELCUT TRIO 3 (KVADRAT, FABRIC IV)



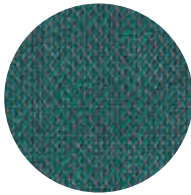
0113



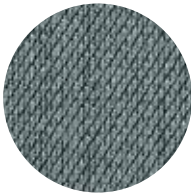
0213



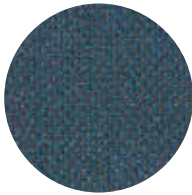
0916



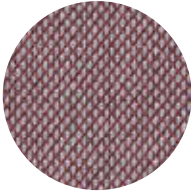
0996



0153



0756



0276



0645



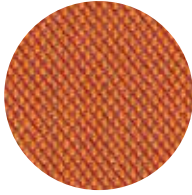
0453



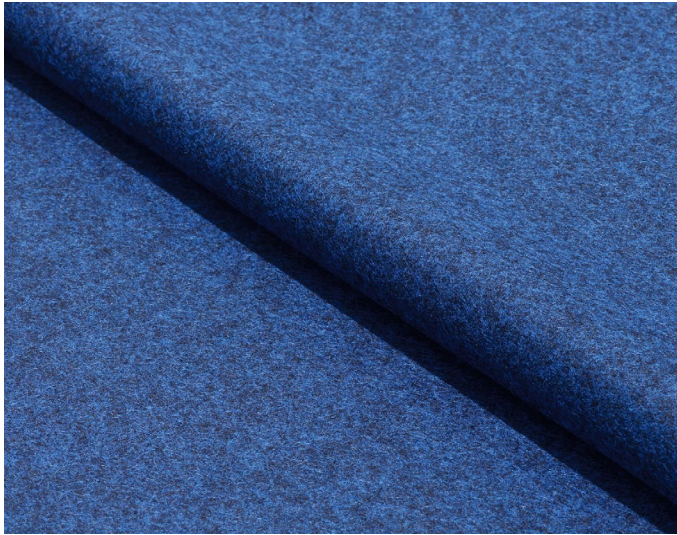
0466



0476



0576



Divina Melange 3

Design: Finn Sködt

Type: Upholstery, panel fabric

Composition: 100% new wool

Yarn type: Woolen

Binding: Broken twill

Width: Approx. 150 cm, 59 inches

Weight: Approx. 840 g/lin.m, 27.1 oz/ly

Repeat: None

Colour difference may occur

Cleaning: Vacuum clean frequently, ideally every week.
Remove stains as soon as they occur, with clean warm water or sparkling water. Please be aware that stain removal will cause a darker area as the wool fibers rise when exposed to water. This can only be reduced by gentle atomizing water over the entire furniture.
Extraction clean when necessary. Avoid using steam.

More info: [Care and maintenance kvadrat.dk](https://www.kvadrat.dk)



10 year
warranty



0575/24

Acoustic



Divina Melange 3

Abrasion

Approx. 45.000 Martindale rubs, EN ISO 12947

Abrasion test results exceeding ACT performance guidelines are not an indicator of product lifespan. Multiple factors affect fabric durability and appearance retention

Pilling

Note 3 EN ISO 12945

Seam slippage

Seam parallel to warp: 2.0 mm parallel to weft: 2.0 mm
EN ISO 13 936-2 180 Newton

Lightfastness

Note 5-7 ISO 105-B02

Fastness to rubbing

Dry note 4-5 ISO 105-X12

Wet note 3-5 ISO 105-X12

Absorption

150 mm airgap

0.65/Class C (flat), 0.90/Class A (waved) EN ISO 354

100 mm airgap

0.55/Class D (flat), 0.85/Class B (waved) EN ISO 354

Airflow

380 Pa s/m EN 29053

kvadrat

Flame resistance

AS/NZS 1530.2

AS/NZS 1530.3

ASTM E84 Class A Adhered

ASTM E84 Class B Unadhered

ASTM E84 Class A Unadhered with treatment *

BS 5852 Crib 5 with treatment *

BS 5852 part 1

BS 5867 part 2 type B

CAN ULC S109 with treatment *

Chinese GB 50222B1 with treatment *

EN 1021-1/2

EN 13501 B-s2, d0 wrapped, with treatment *

EN 13 773 class 1 with treatment *

IMO FTP Code 2010 Part 8

JIS L 1091 A-1 D

NF D 60 013

NFPA 260

NFPA 701 with treatment *

ÖNORM B1/Q1

SN 198 898 5.3 with treatment *

UNI 9175 1IM

US Cal. Bull. 117-2013

Free from added flame retardant chemicals as standard

** To pass this test flame retardant treatment is necessary.*

We are looking into more environmentally friendly alternatives but for now, the external finisher may use a treatment containing halogen-based flame retardants

ACT Guidelines Woven fabrics

Flammability

US Cal. Bull. 117-2013

Dry & Wet Crocking

Dry Crocking: Grade 4.5

Wet Crocking: Grade 3.5

Colour Fastness to Light

Grade 4.5 minimum 40 hours

Physical properties

Breaking Strength warp 106 / weft 86 lbs.

Seam Slippage warp 106.5 / weft 88.5 lbs.

Abrasion

45.000 cycles Martindale – High Traffic / Public Spaces

Benefits of wool

Wool is a renewable resource

Wool is very comfortable because of its ability to absorb/give off humidity

Wool is flame retardant

Wool is biodegradable

Wool is naturally soil resistant

Wool ages with grace

Quality benefits

Complies with Möbelfakta

Very good abrasion

Very good lightfastness

Flame retardant

Environmental benefits

EU Ecolabel compliant

Free of intentionally added PFAS

REACH compliant

Californian Proposition 65 list compliant

LBC Red list compliant

Healthier Hospitals Compliant

Green building certificates

Greenguard Gold: Low chemical emission

Environmental Product Declaration (EPD): 3rd Party Verified.

ISO 14025 & EN 15804. Developed in accordance with the European standard EN 15804+A2.

Health Product Declaration (HPD): Declaring textile content and substance

Country of origin

United Kingdom

Launch

2000

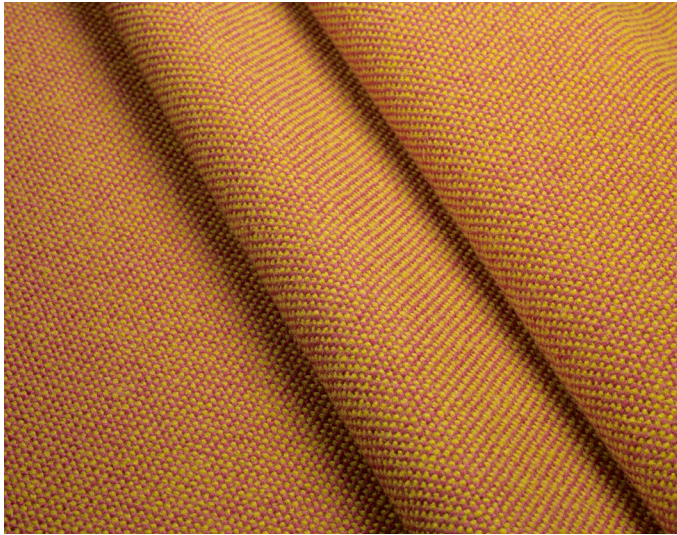
Warranty

10 years. See terms and conditions on kvadrat.dk

Kvadrat packaging and cardboard is recyclable. Cardboard material is FSC certified and / or contains recycled content.

For further information
kvadrat.dk

kvadrat



Hallingdal 65

Design: Nanna Ditzel

Type: Upholstery, panel fabric

Composition: 70% new wool, 30% viscose

Yarn type: Woolen

Binding: Plain

Width: Approx. 130 cm, 51 inches

Weight: Approx. 800 g/lin.m, 25.8 oz/ly

Repeat: None

Foreign fibers may occur in light colours

Colour difference may occur

Cleaning: Vacuum clean frequently, ideally every week.
Remove stains as soon as they occur, with clean warm water or sparkling water. Extraction clean when necessary. Extraction cleaning might dissolve water-based glue. Pay attention to temperature and amount of cleaning fluid.

Disinfection, see kvadrat.dk

More info: Care and maintenance kvadrat.dk



10 year warranty



Hallingdal 65

Abrasion

Approx. 100.000 Martindale rubs, EN ISO 12947

Abrasion test results exceeding ACT performance guidelines are not an indicator of product lifespan. Multiple factors affect fabric durability and appearance retention

Pilling

Note 4-5, EN ISO 12945

Seam slippage

Seam parallel to warp: 4.5 mm parallel to weft: 4.0 mm
EN ISO 13 936-2 180 Newton

Snagging

Grade 1, ICI Testmethod FAB 29, Tumble-Box

Lightfastness

Note 5-7 ISO 105-B02

Fastness to rubbing

Dry note 4-5 ISO 105-X12

Wet note 3-5 ISO 105-X12

Absorption

0.45/Class D (flat), 0.70/Class C (waved) EN ISO 354

Airflow

182 Pa s/m EN 29053

Flame resistance

AS/NZS 1530.3

AS/NZS 3837 class 2

ASTM E84 Class A Adhered

ASTM E84 Class B Unadhered

BS 5852 Crib 5

BS 5852 part 1

BS 7176 Low Hazard

EN 1021-1/2

IMO FTP Code 2010 Part 8

NF D 60 013

NFPA 260

ÖNORM B1/Q1

SN 198 898 5.3 with treatment *

UNI 9175 1IM

US Cal. Bull. 117-2013

Free from added flame retardant chemicals as standard

** To pass this test flame retardant treatment is necessary. We are looking into more environmentally friendly alternatives but for now, the external finisher may use a treatment containing halogen-based flame retardants*

kvadrat

ACT Guidelines Woven fabrics

Flammability

US Cal. Bull. 117-2013

Dry & Wet Crocking

Dry Crocking: Grade 4.5

Wet Crocking: Grade 4.0

Colour Fastness to Light

Grade 4.5 minimum 40 hours

Physical properties

Pilling Class 4-5

Breaking Strength warp 121 / weft 121 lbs.

Seam Slippage warp 31 / weft 29 lbs.

Abrasion

100.000 cycles Martindale – High Traffic / Public Spaces

Benefits of wool

Wool is a renewable resource

Wool is very comfortable because of its ability to absorb/
give off humidity

Wool is flame retardant

Wool is biodegradable

Wool is naturally soil resistant

Wool ages with grace

Quality benefits

Complies with Möbelfakta

Very good abrasion

Good lightfastness

Flame retardant

Environmental benefits

EU Ecolabel compliant

Free of intentionally added PFAS

REACH compliant

Californian Proposition 65 list compliant

LBC Red list compliant

Healthier Hospitals compliant

Green building certificates

Greenguard Gold: Low chemical emission

Environmental Product Declaration (EPD): 3rd Party Verified.

ISO 14025 & EN 15804. Developed in accordance with the

European standard EN 15804+A2.

Health Product Declaration (HPD): Declaring textile content
and substance

Country of origin

Norway

Launch

1965

Warranty

10 years. See terms and conditions on kvadrat.dk

Kvadrat packaging and cardboard is recyclable. Cardboard
material is FSC certified and / or contains recycled content.

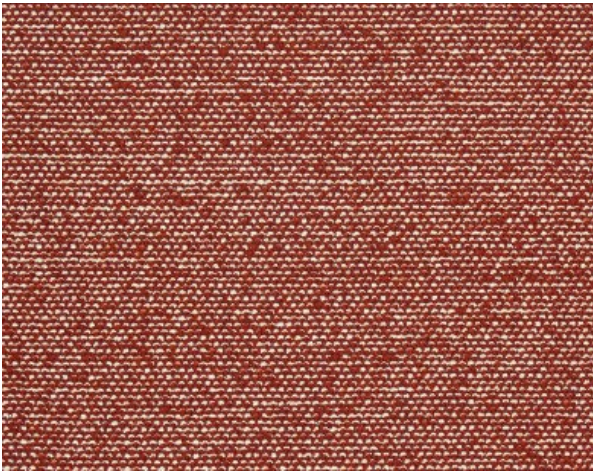
For further information

kvadrat.dk

kvadrat

SAHCO

1831



Safire

Type: Upholstery

Composition: 43% viscose, 17% polyacrylic, 15% wool,
9% cotton, 8% linen, 8% polyester

Yarn type: Chenille

Binding: Plain

Width: Approx. 140 cm, 55 inches

Weight: Approx. 1010 g/lin.m, 25 oz/ly

Repeat: none

Foreign fibers may occur in light colours

Colour difference may occur

Cleaning: Vacuum clean frequently, ideally every week.

Remove stains as soon as they occur, with clean warm water
or sparkling water. Extraction clean when necessary. No
ironing only steaming. Steaming might be necessary to
remove pressure marks.

Extraction cleaning might dissolve water based glue. Pay
attention to temperature and amount of cleaning fluid.

Disinfection, see www.kvadrat.dk/en/sahco



10^{year}
warranty



Abrasion

Approx. 40.000 Martindale rubs, EN ISO 12947

*Abrasion test results exceeding ACT performance
guidelines are not an indicator of product lifespan. Multiple
factors affect fabric durability and appearance retention*

Pilling

Note 3, EN ISO 12945

Seam slippage

Seam parallel to warp: 4.4 mm, parallel to weft: 3.2 mm
EN ISO 13 936-2 180 Newton

Lightfastness

Note 5-6 ISO 105-B02

Fastness to rubbing

Dry note 4-5 ISO 105-X12

Wet note 3-5 ISO 105-X12

Flame resistance

AS/NZS 3837 Class 2

BS 5852 Crib 5 with treatment *

BS 5852 Part 1

EN 1021-1/2

IMO FTP Code 2010 Part 8

US Cal. Bull. 117-2013

** To pass this test flame retardant treatment is necessary.
We are looking into more environmental friendly
alternatives but for now the external finisher may use a
treatment containing halogen based flame retardants.*

ACT Guidelines Woven fabrics

Flammability

US Cal. Bull. 117-2013

Dry & Wet Crocking AATCC 8

Dry Crocking: Grade 4.5

Wet Crocking: Grade 4.0

Colour Fastness to Light AATCC 16

Grade 5 minimum 40 hours

Physical properties

Pilling ASTM D3511 Class 4

Breaking Strength ASTM D5034 warp 200 / weft 147 lbs

Seam Slippage ASTM D4034 warp 100 / weft 42,5 lbs

Abrasion ASTM D4966

44.000 cycles Martaindale – High Traffic

Environmental benefits

Follow the EU Ecolabel dye restrictions incl. AZO dye and heavy metal restrictions

No use of halogen based flame retardants (incl. brominated and chlorinated)

REACH compliant

Californian Proposition 65 list compliant

LBC Red list compliant

Green building certificates

Greenguard Gold: Low chemical emission

Health Product Declaration (HPD): Declaring textile content and substance

Country of origin

Italy

Launch

2019

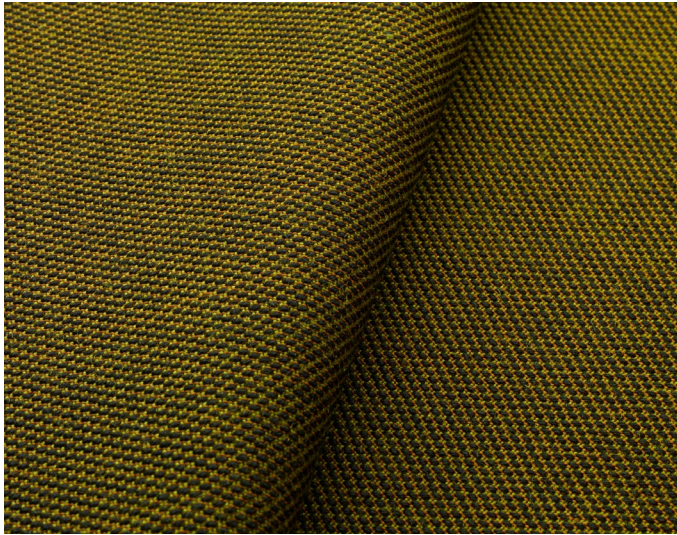
Warranty

10 years. See terms and conditions on kvadrat.dk

Kvadrat packaging and cardboard is recyclable. Cardboard material is FSC certified and / or contains recycled content.

For further information

www.kvadrat.dk/en/sahco



Steelcut Trio 3

Design: Frans Gijkmeijer & Giulio Ridolfo

Type: Upholstery

Composition: 90% new wool, 10% nylon

Yarn type: Worsted

Binding: Semi-plain

Width: Approx. 140 cm, 55 inches

Weight: Approx. 770 g/lin.m, 24.8 oz/ly

Repeat: None

Colour difference may occur

Foreign fibres may occur in light colours

Cleaning: Vacuum clean frequently, ideally every week.
Remove stains as soon as they occur, with clean warm water or sparkling water. Extraction clean when necessary. Extraction cleaning might dissolve water-based glue. Pay attention to temperature and amount of cleaning fluid.

Disinfection, see kvadrat.dk

More info: Care and maintenance kvadrat.dk



10 year
warranty



Steelcut Trio 3

Abrasion

Approx. 100.000 Martindale rubs, EN ISO 12947

Abrasion test results exceeding ACT performance guidelines are not an indicator of product lifespan. Multiple factors affect fabric durability and appearance retention

Pilling

Note 4, EN ISO 12945

Seam slippage

Seam parallel to warp: 3.5 mm parallel to weft: 2.0 mm
EN ISO 13 936-2 180 Newton

Lightfastness

Note 5-7 ISO 105-B02

Fastness to rubbing

Dry note 4-5 ISO 105-X12

Wet note 3-5 ISO 105-X12

Absorption

0.70/Class C (flat), 0.95/Class A (waved) EN ISO 354

Airflow

910 Pa s/m EN 29053

Flame resistance

AS/NZS 1530.3

AS/NZS 3837 class 2

ASTM E84 Class B Unadhered

ASTM E84 Class B Adhered

BS 5852 crib 5 with treatment *

BS 5852 part 1

BS 7176 Low Hazard

BS EN 13501-1 B, s2 d1 with treatment *

EN 1021-1/2

IMO FTP Code 2010 Part 8

NF D 60 013

NFPA 260

ÖNORM B1/Q1

SN 198 898 5.3 with treatment *

UNI 9175 1IM

US Cal. Bull. 117-2013

Free from added flame retardant chemicals as standard

** To pass this test flame retardant treatment is necessary.
We are looking into more environmentally friendly alternatives but for now, the external finisher may use a treatment containing halogen-based flame retardants*

kvadrat

ACT Guidelines Woven fabrics

Flammability

US Cal. Bull. 117-2013

Dry & Wet Crocking

Dry Crocking: Grade 4.5

Wet Crocking: Grade 5.0

Colour Fastness to Light

Grade 5.0 minimum 40 hours

Physical properties

Pilling Class 4

Breaking Strength warp 251 / weft 140 lbs.

Seam Slippage warp 98.9 / weft 115.5 lbs.

Abrasion

100.000 cycles Martindale – High Traffic / Public Spaces

Benefits of wool

Wool is a renewable resource

Wool is very comfortable because of its ability to absorb/
give off humidity

Wool is flame retardant

Wool is biodegradable

Wool is naturally soil resistant

Wool ages with grace

Quality benefits

Complies with Möbelfakta

Very good abrasion

Good lightfastness

Flame retardant

Environmental benefits

EU Ecolabel compliant

No content of PFCs or 'PFAS'

REACH compliant

Californian Proposition 65 list compliant

LBC Red list compliant

Healthier Hospitals compliant

Green building certificates

Greenguard Gold: Low chemical emission

Environmental Product Declaration (EPD): 3rd Party Verified.

ISO 14025 & EN 15804. Developed in accordance with the

European standard EN 15804+A2.

Health Product Declaration (HPD): Declaring textile content
and substance

Country of origin

United Kingdom

Launch

2007

Warranty

10 years. See terms and conditions on kvadrat.dk

Kvadrat packaging and cardboard is recyclable. Cardboard
material is FSC certified and / or contains recycled content.

For further information

kvadrat.dk

kvadrat